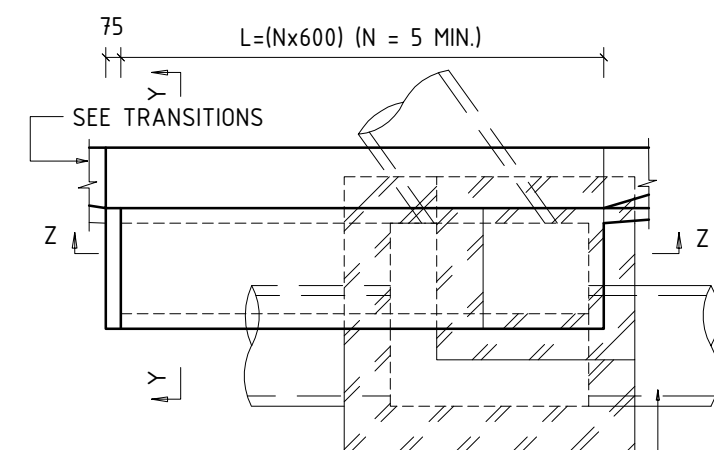
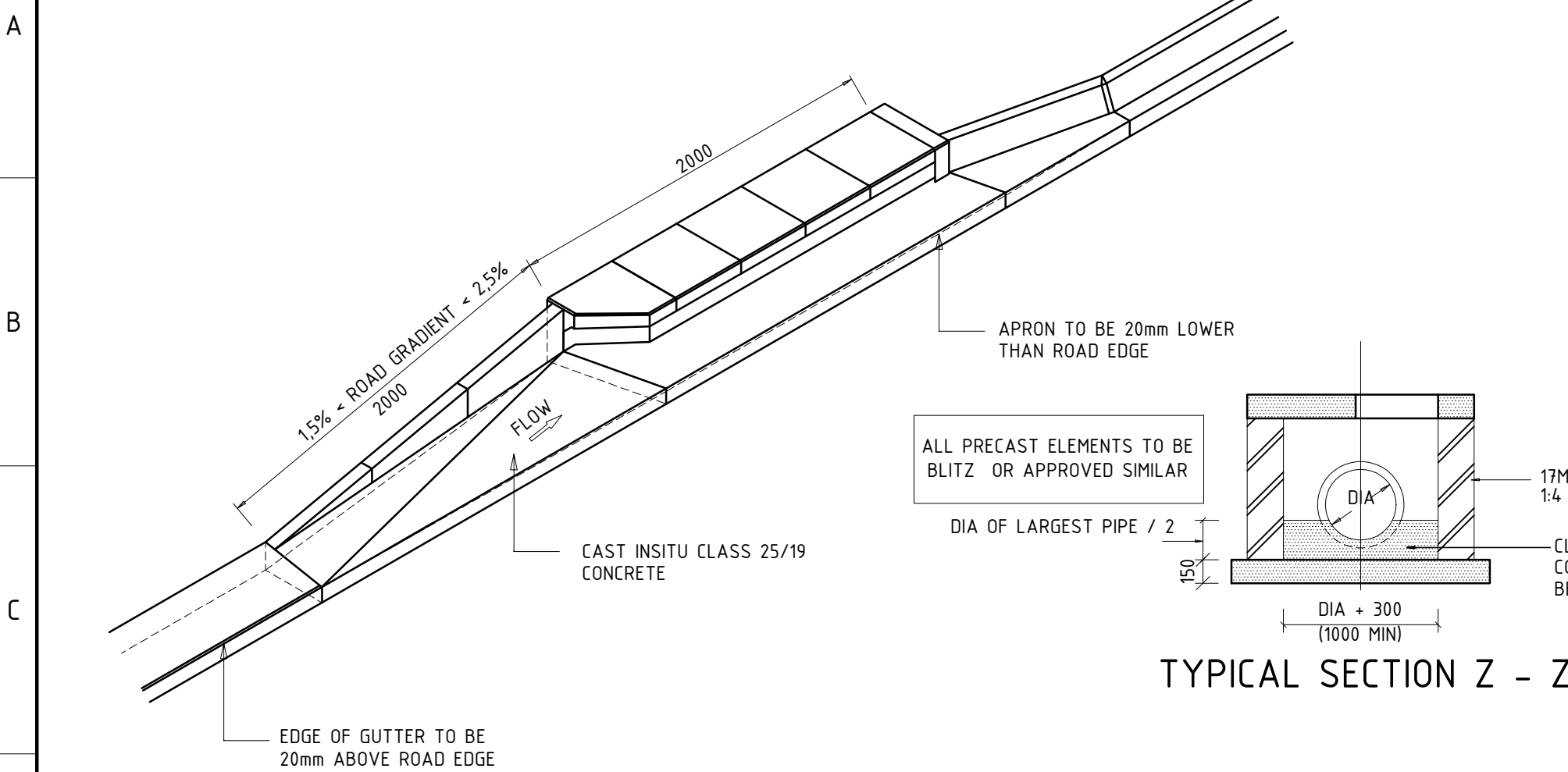
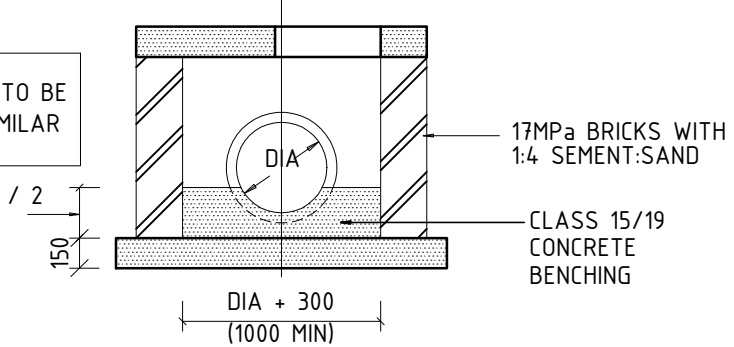


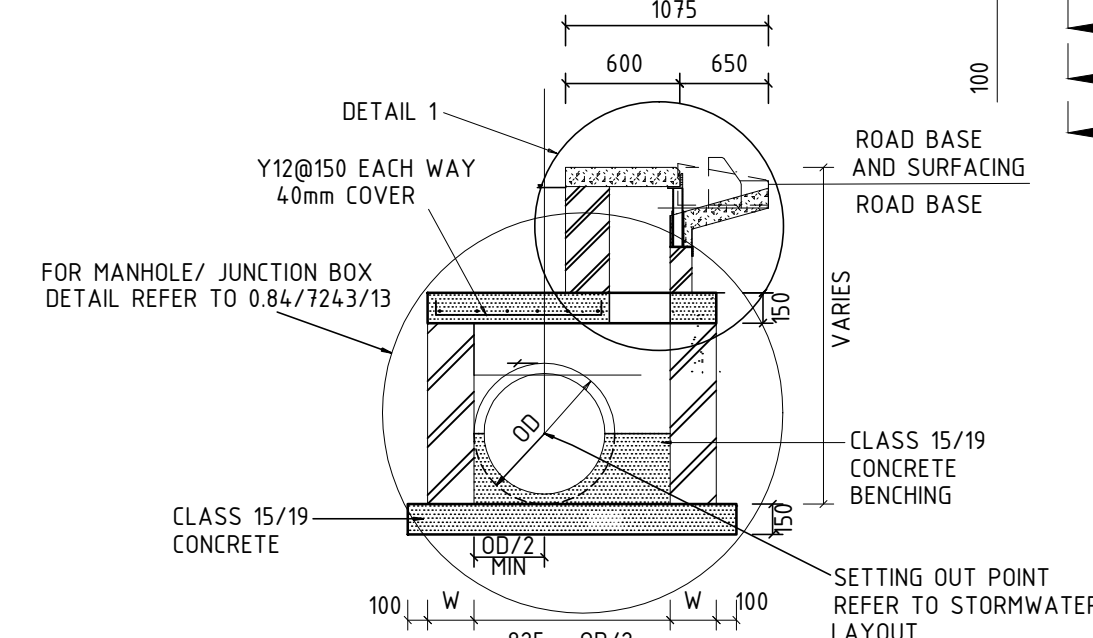
1	2	3	4	5	6	7	8	9	10	11	12	13	14	15	16
---	---	---	---	---	---	---	---	---	----	----	----	----	----	----	----



PLAN - KERB INLET

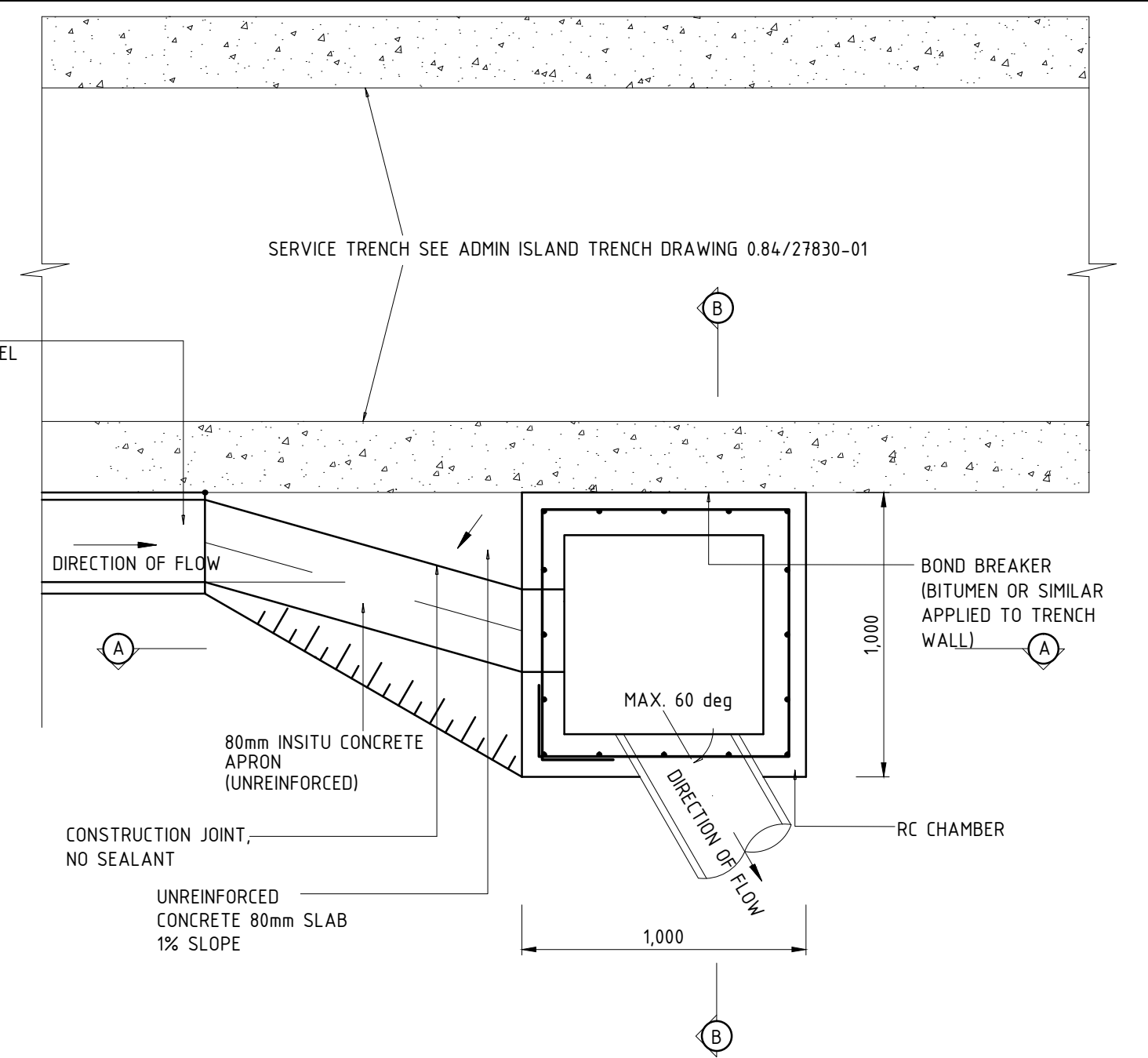
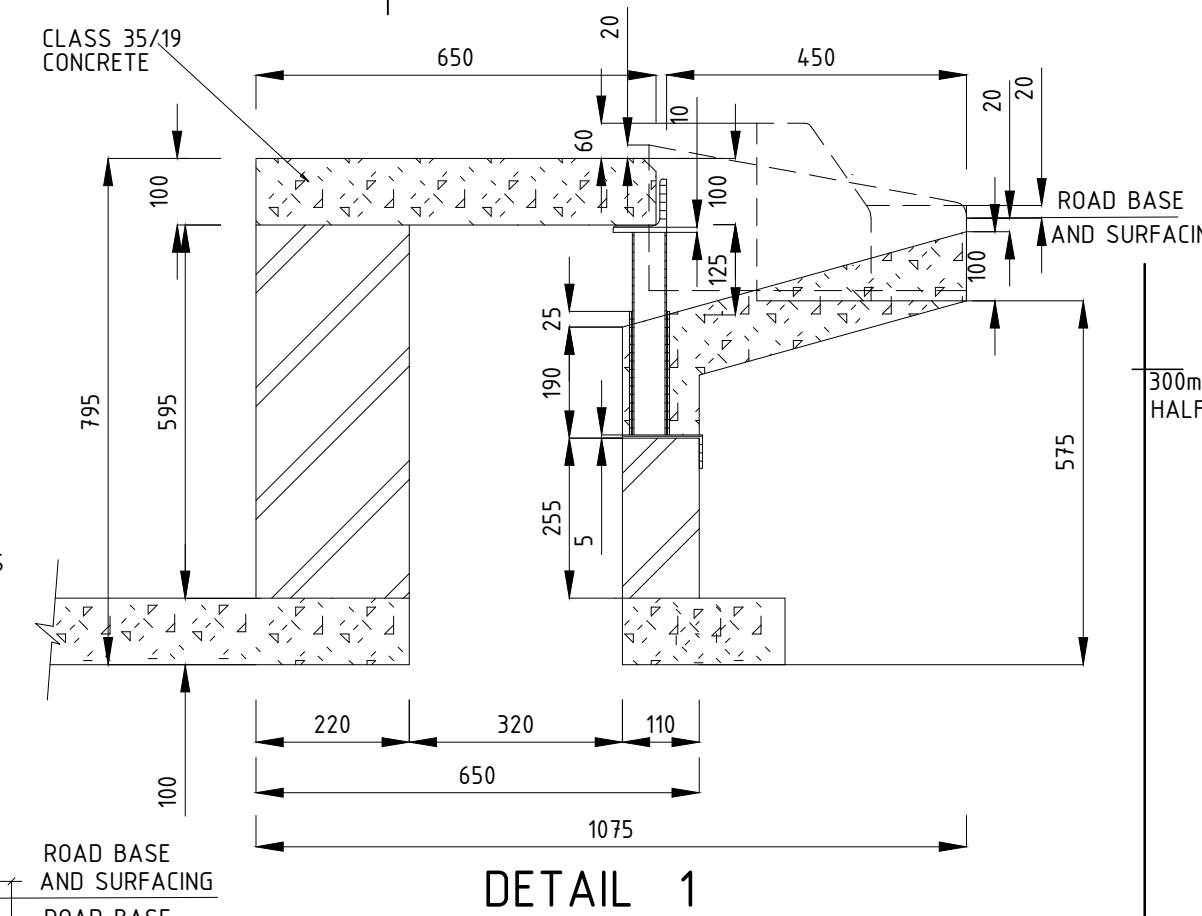


TYPICAL SECTION Z - Z

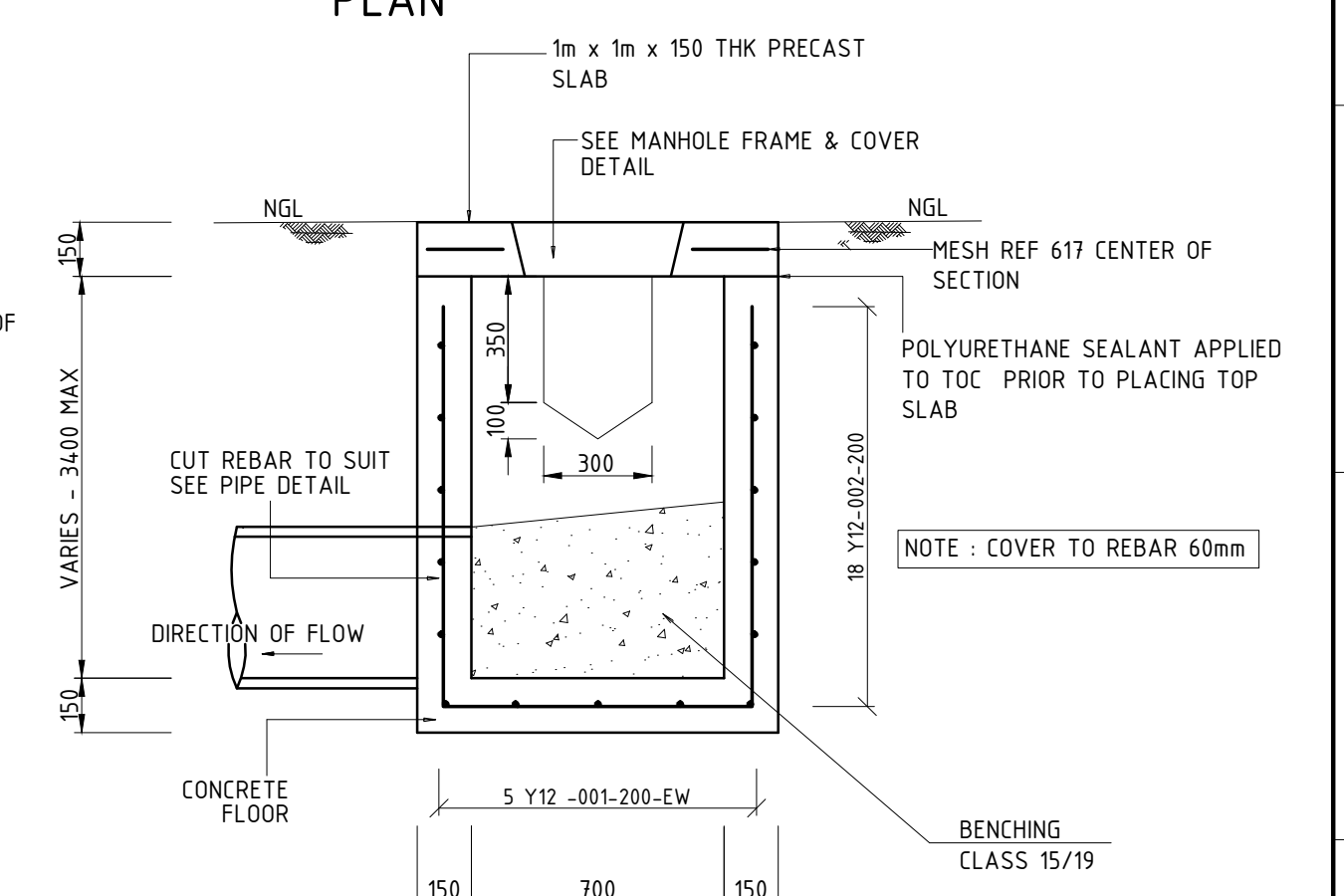


DETAIL 1

DIA	H	W
>900	<2750	220
	2750-5500	330
	5500-7500	440
	(1500)	220
1050-1800	1500-3000	330

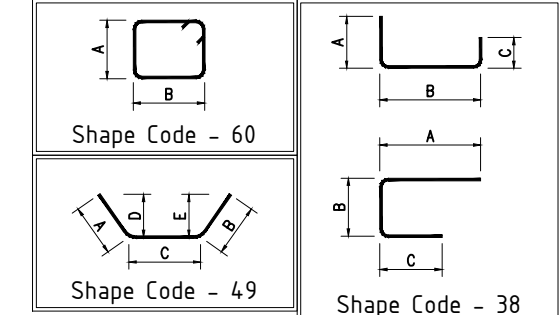


## PLAN

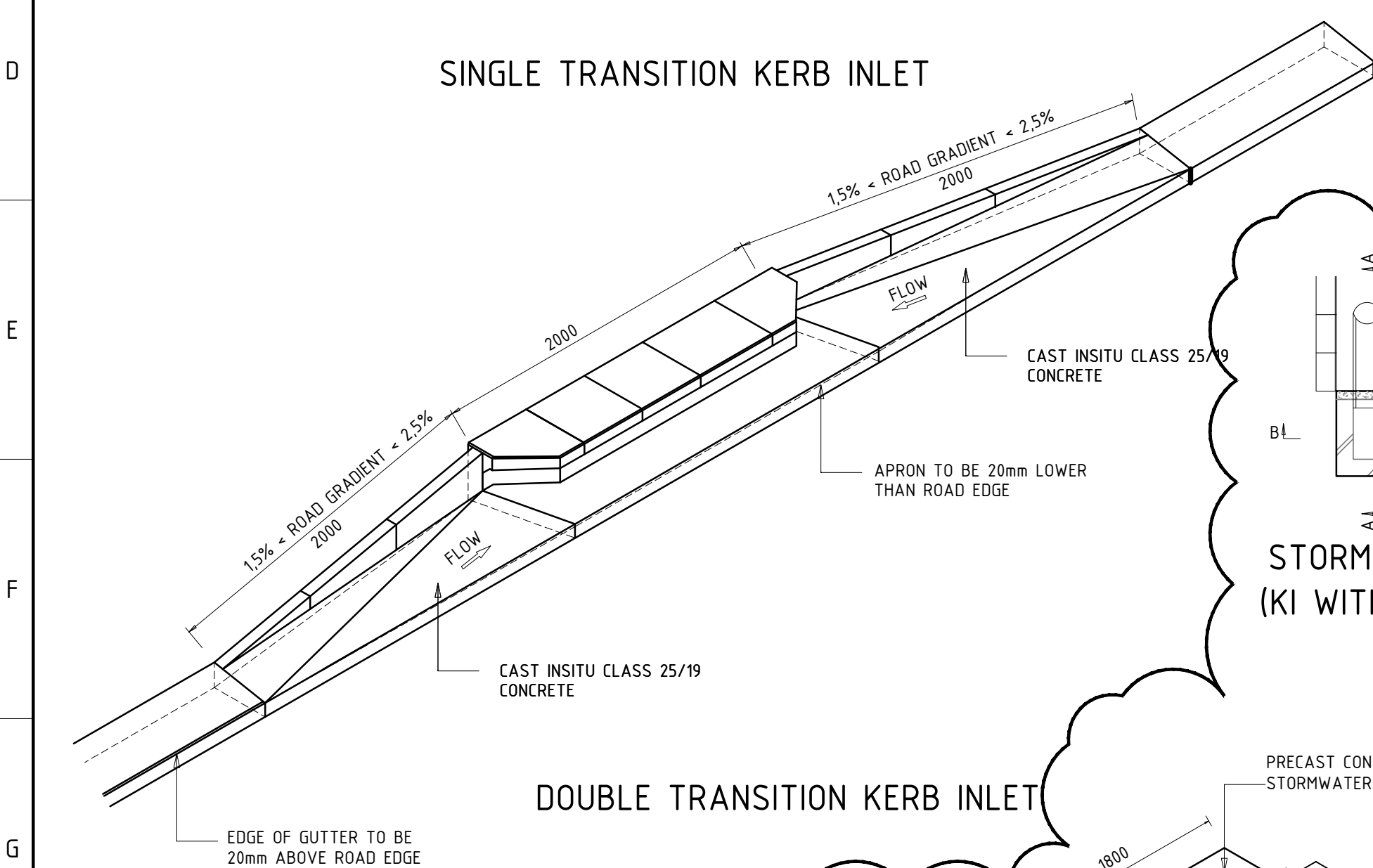


SECTION B-B

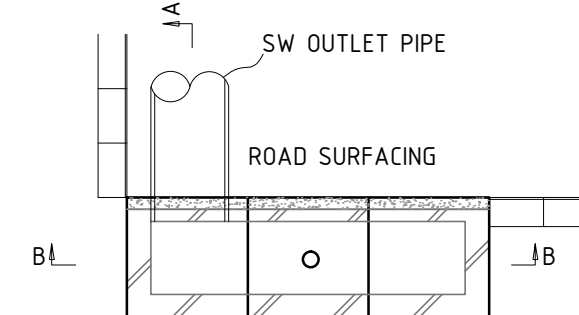
MEMBER		No OF	BARS PER MEMB	DIA.	LENGTH		TOTAL NUMBER-		MARK	S	C	B E N D I N G				
												A	B	C	D	E/r
CHAMBER		2	10 18 2	Y12 Y12 Y12	7650 3650 1300	20 36 4	001 002 003	38 60 49	3415 880 400	855 880 400	3415	490	360	360		
	8	10	12	16	20	25	32	40	TOT	Date						
R										Det. by						
Y			257						257	Ref Dwg						
TOT			257						257	Job No						
										Revision						
										Schedule No						



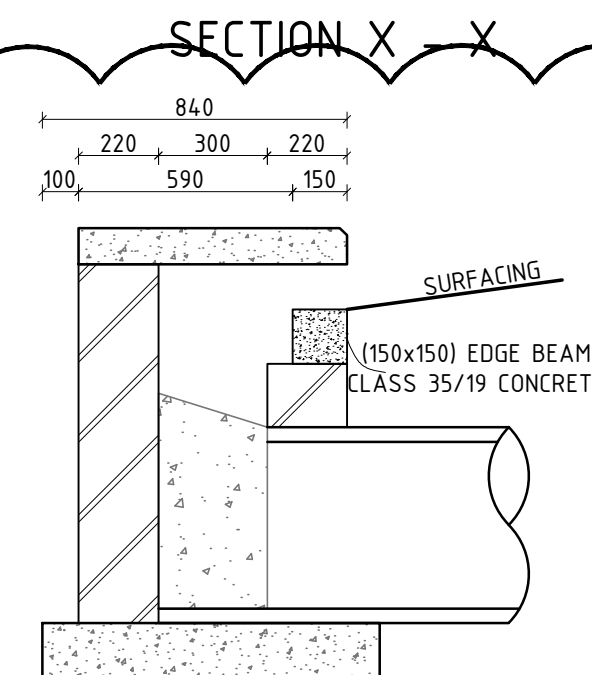
KKS CODE 00UST



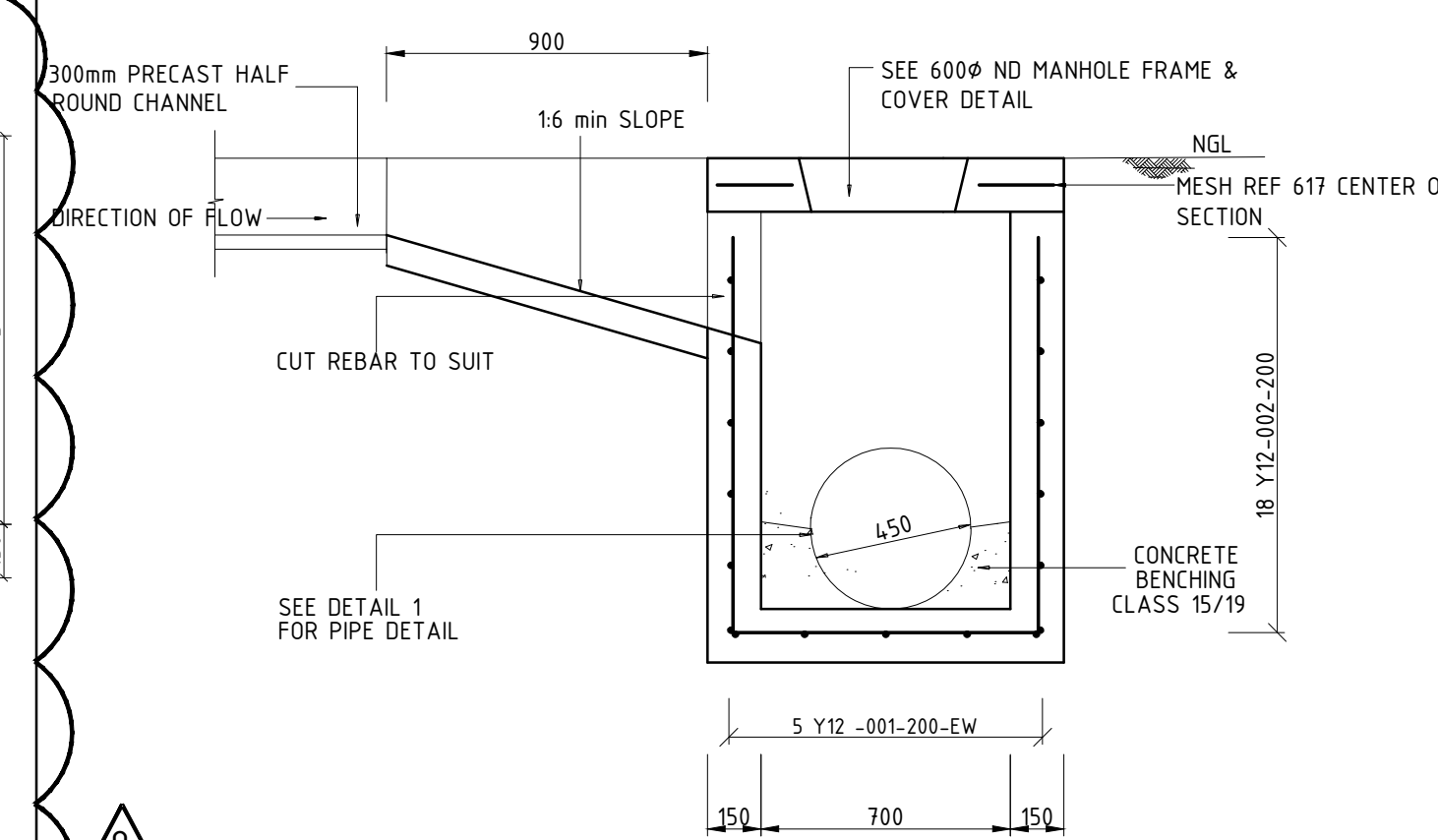
DOUBLE TRANSITION KERB INLET (



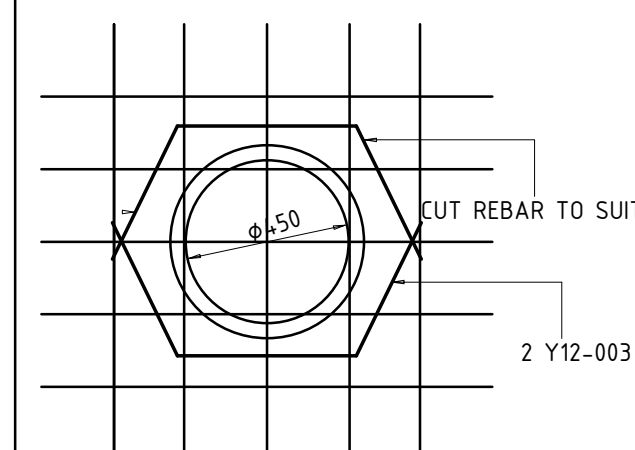
STORMWATER KI DETAIL  
(KI WITHOUT TRANSITION)



SECTION A-A  
(KI WITHOUT TRANSITION)



SECTION A-A

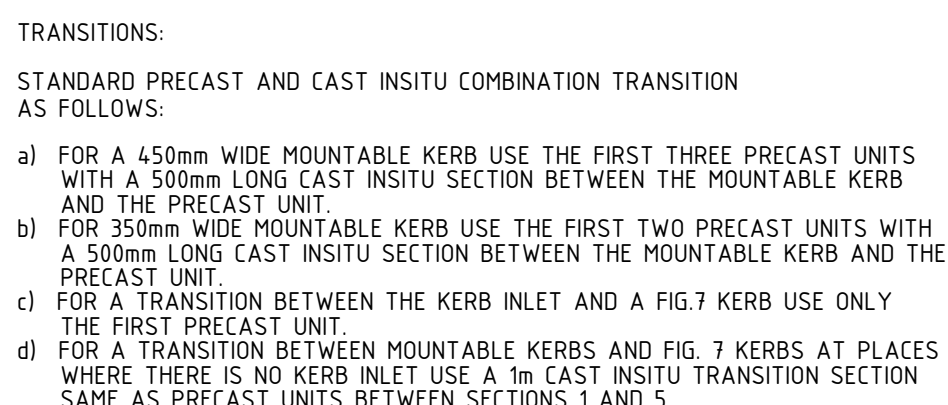


DETAIL 1

HALF ROUND CHANNEL INLET DETAIL

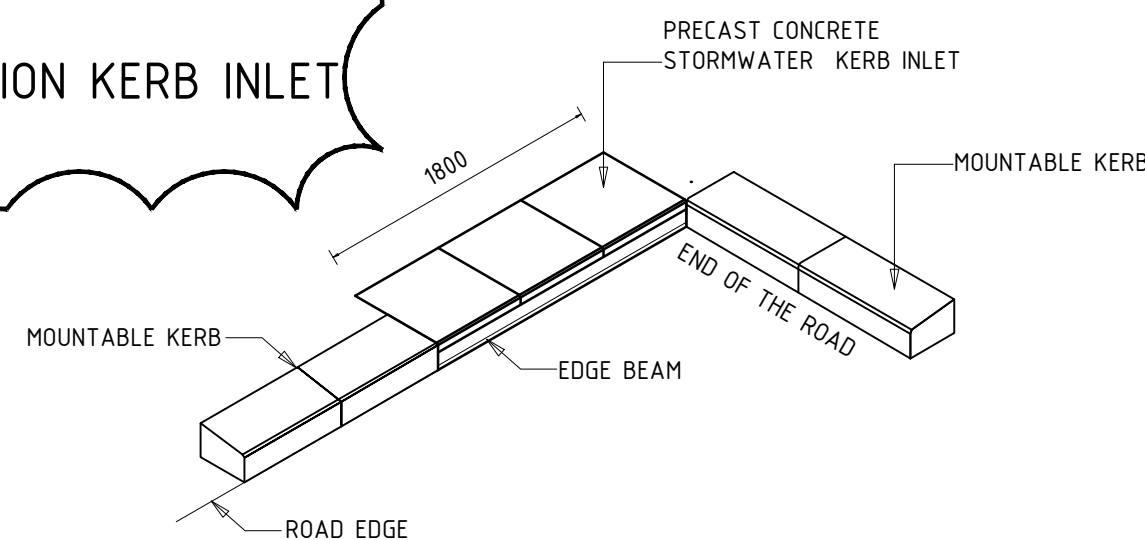


SECTION B-B  
(WITHOUT TRANSITION)



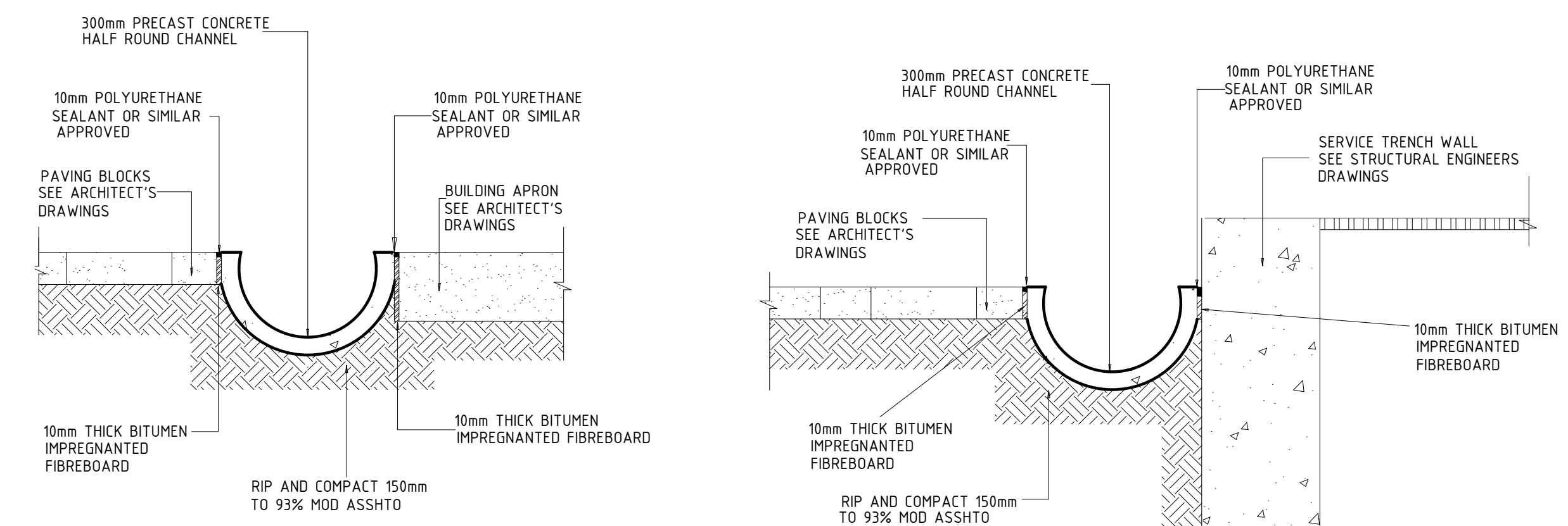
KERB INLET WITHOUT TRANSITION

### STORMWATER KERB INLET DETAIL



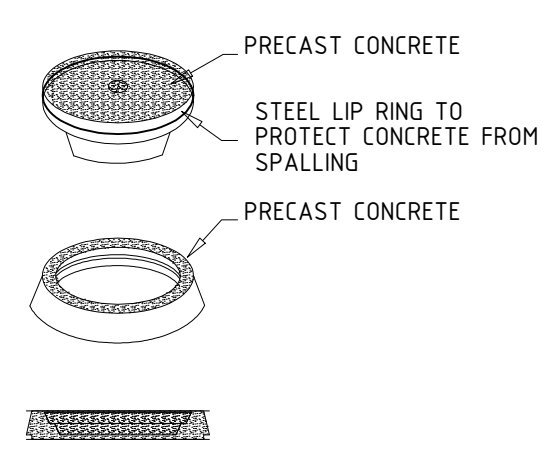
KARB INLET WITHOUT TRANSITION

### STORMWATER KERB INLET DETAIL



TYPICAL HALF ROUND CHANNEL DETAIL

NTS



## PRECAST CONCRETE FRAME AND COVER (SALBERG TYPE)

NOTE : ALL CONCRETE MANHOLE COVERS SHALL HAVE THE LETTER "SW" FORMED OR ENGRAVED ON TOP. EACH LETTER SHALL BE 50MM WIDE, 75MM HIGH AND 5MM THICK.  
ALL CONCRETE TO BE STRENGTH 35MPa

**FOR CONSTRUCTION**

PRECAST C

[illegible]

14031 - C - 202

0.84 / 7243

SIZE  
GROOTTE **A11**